

Beacon Mental Health presents:



ENG-AGE

- June 10 , 2025 (2nd Tuesday of the month)
- 1:00 to 2:00 PM
- Platte County Health Dept.

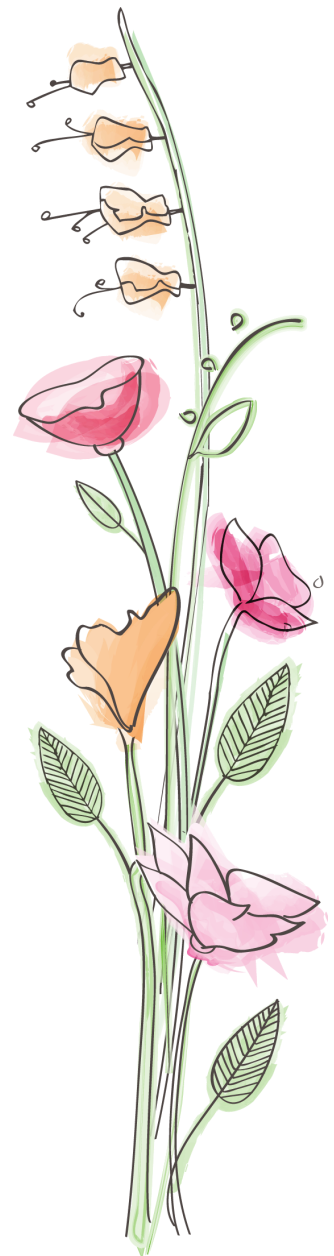
FEATURING: **BILLIE LU MOZEE,**
LCSW, BEHAVIORAL THERAPIST

TOPIC: **STRENGTHENING**
FAMILIES
AND
SUPPORTS



JOIN US FOR INFORMATION,
CONVERSATION AND REFRESHMENTS.

SPECIAL THANK YOU TO PLATTE COUNTY SENIOR FUND
AND PLATTE COUNTY HEALTH
DEPARTMENT FOR THEIR CON-
TINUED SUPPORT



**PLATTE COUNTY
SENIOR FUND**